

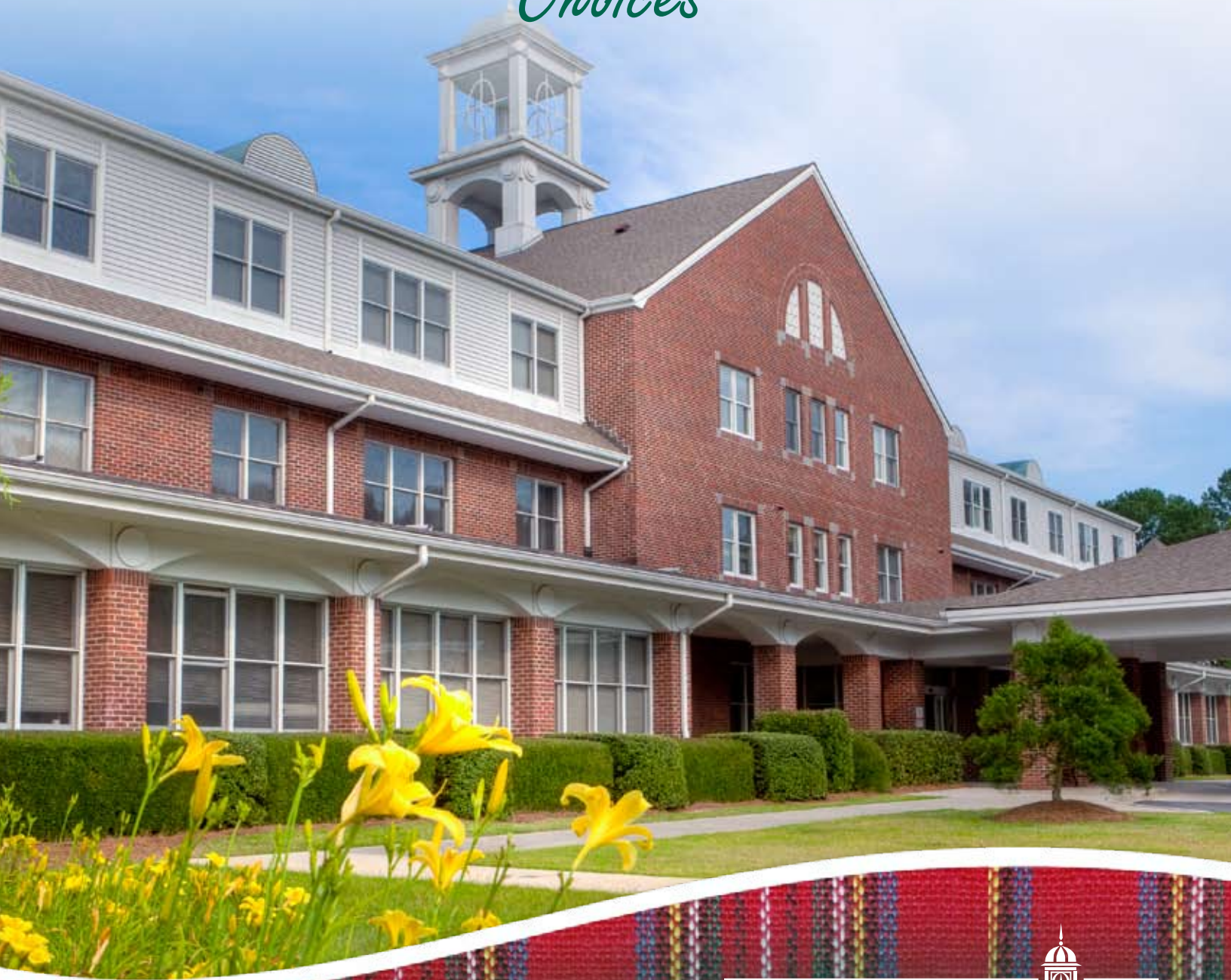
---

# RESIDENTIAL LIVING

---

*Choices*

---



  
**Scotia Village**

*Love Where You Live*



# Scotia Village

*Love Where You Live*

- A** Single Family Homes
- B** Villas
- C** Garden Apartments
  - 1) Skye Court
  - 2) Kintyre Court
- D** Scotia Hall
  - 3) Independent Apartments
  - 4) Fitness Center
  - 5) Heather Glen & Special Care
  - 6) Tartan Place





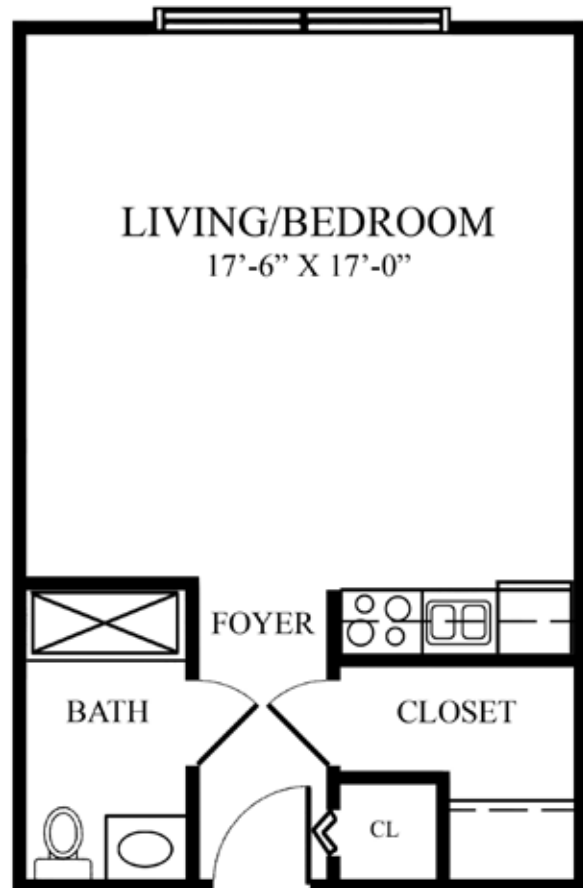
# APARTMENTS & GARDEN APARTMENTS

# The Selkirk

Studio Apartments



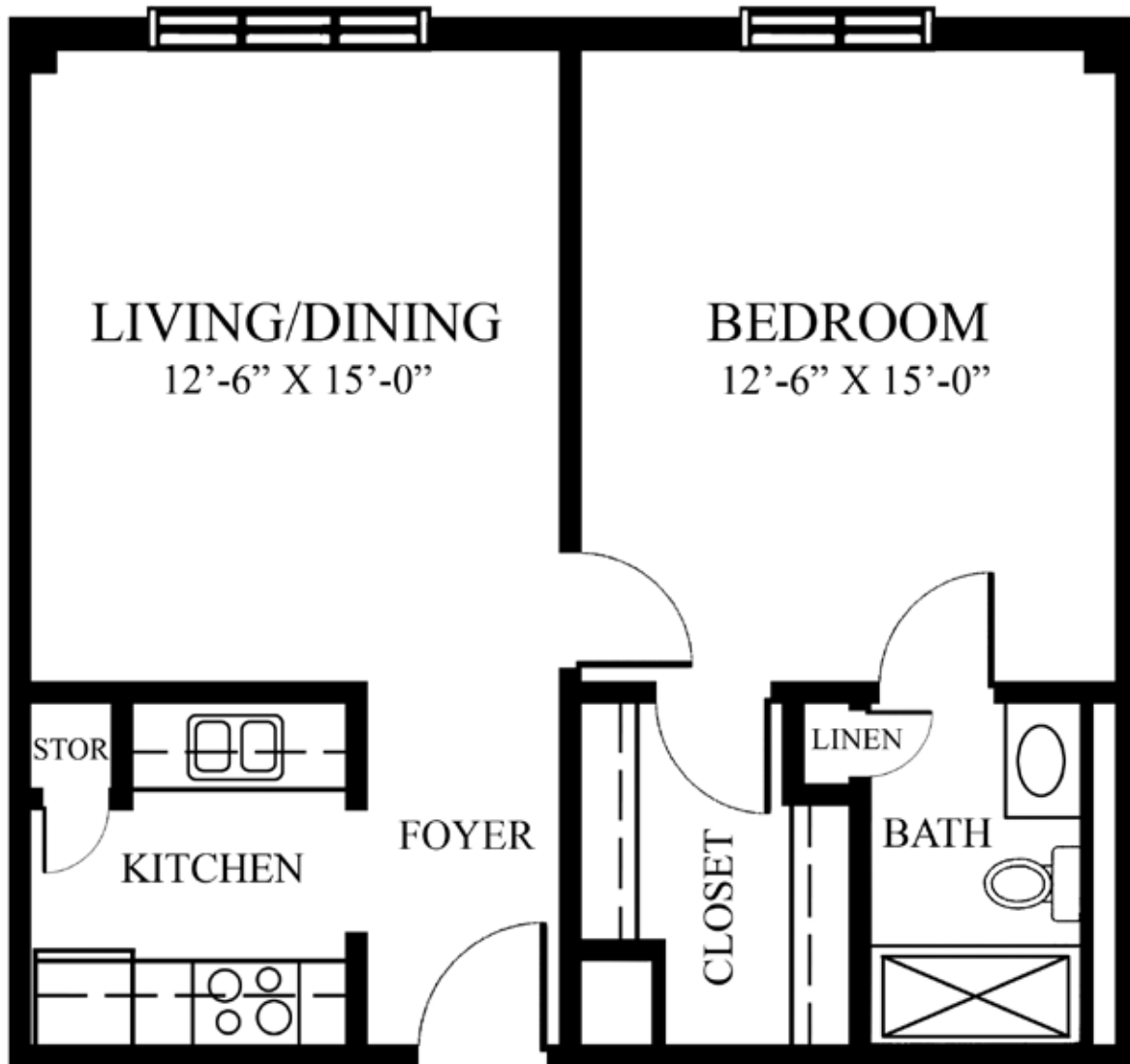
- 400 Square Feet
- Kitchen Area
- Full Bath
- Large Walk-in Closet
- Large Windows
- Easy Access to Service Areas



- 450 Square Feet
- Kitchen Area
- Full Bath
- Large Walk-in Closet
- Large Windows
- Easy Access to Service Areas

# The Stirling

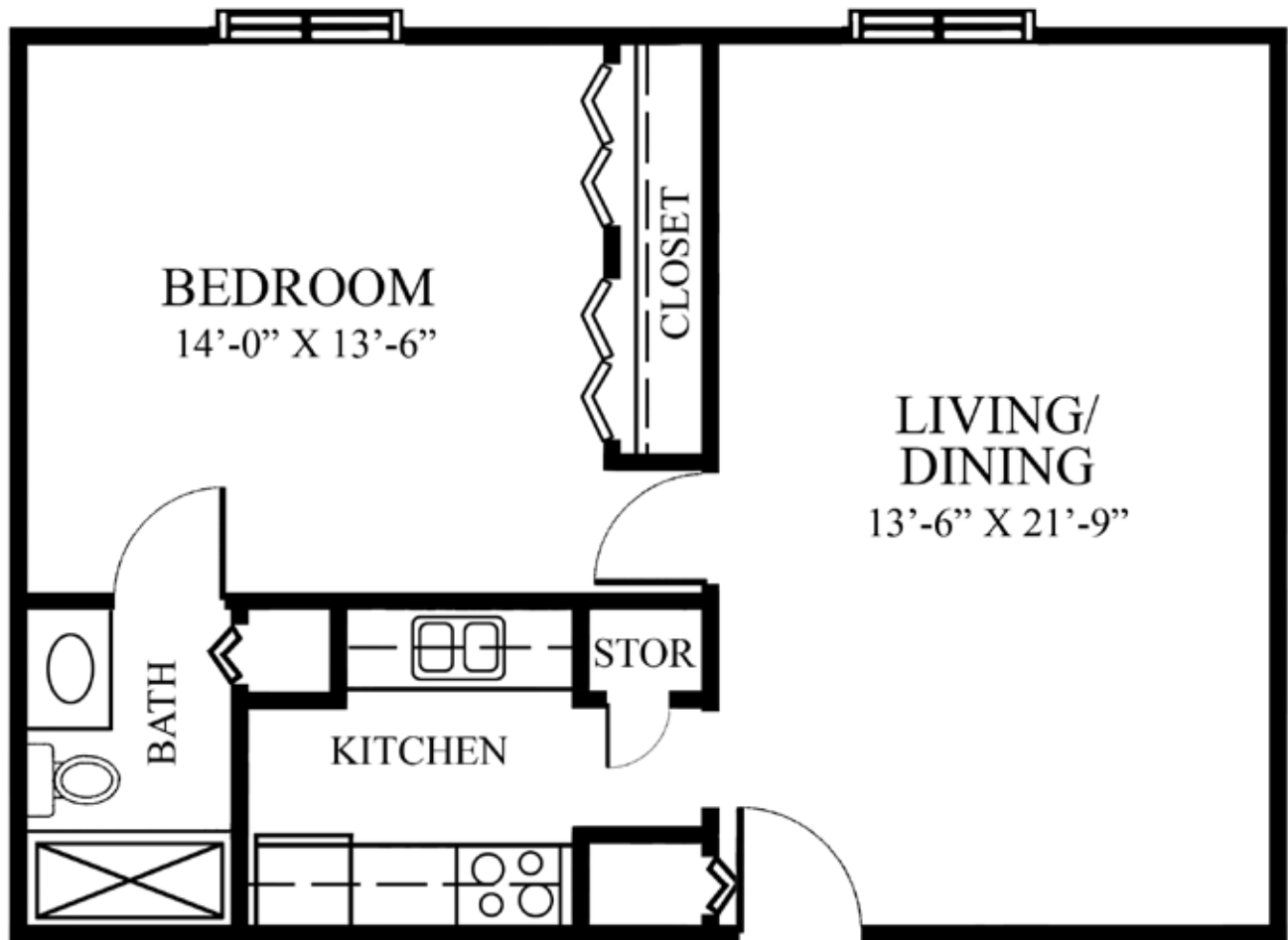
One Bedroom  
Apartment



- 650 Square Feet
- Full Kitchen
- Full Bath w/Linen Closet
- Large Walk-in Closet
- Large Windows
- Easy Access to Service Areas

# The Stirling

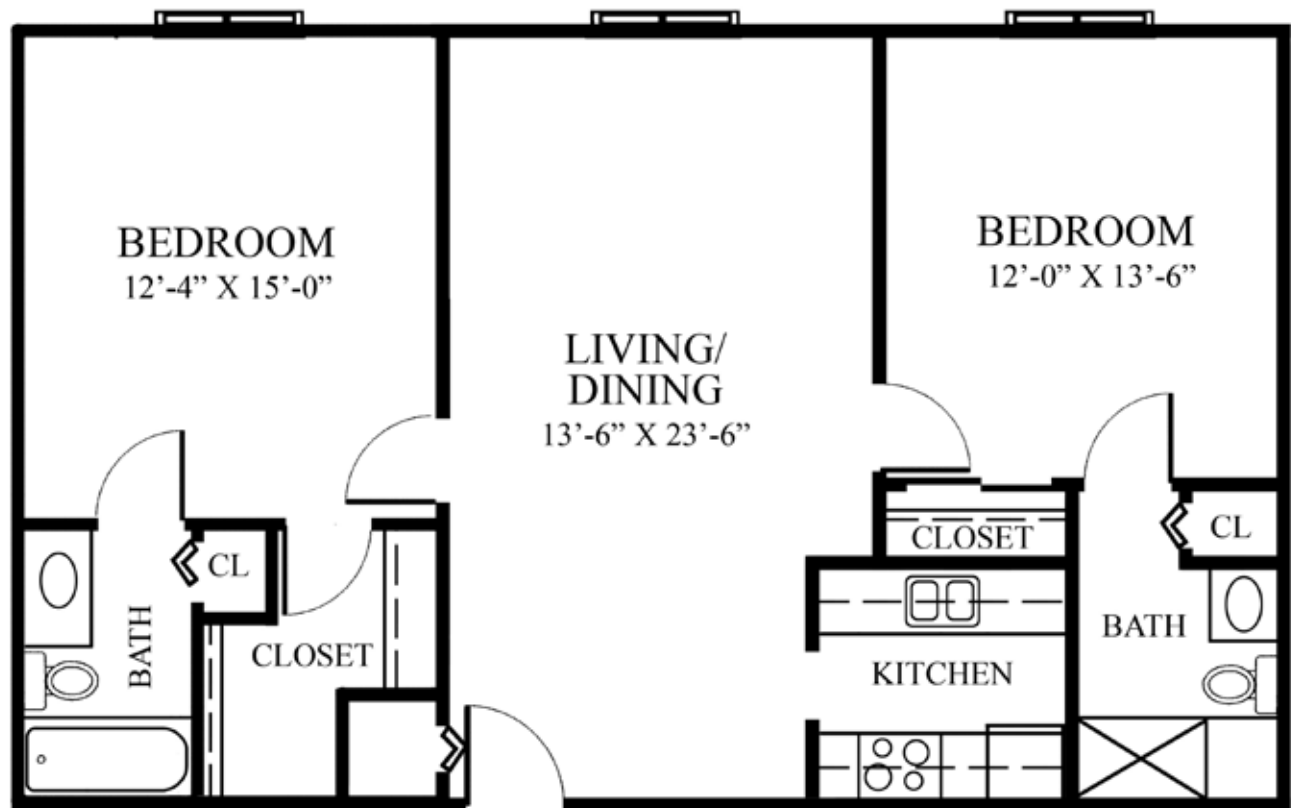
Expanded  
One Bedroom Apartment



- 725 Square Feet
- Full Kitchen
- Full Bath w/Linen Closet
- Large Windows
- Easy Access to Service Areas

# The Shetland

Two Bedroom Apartment

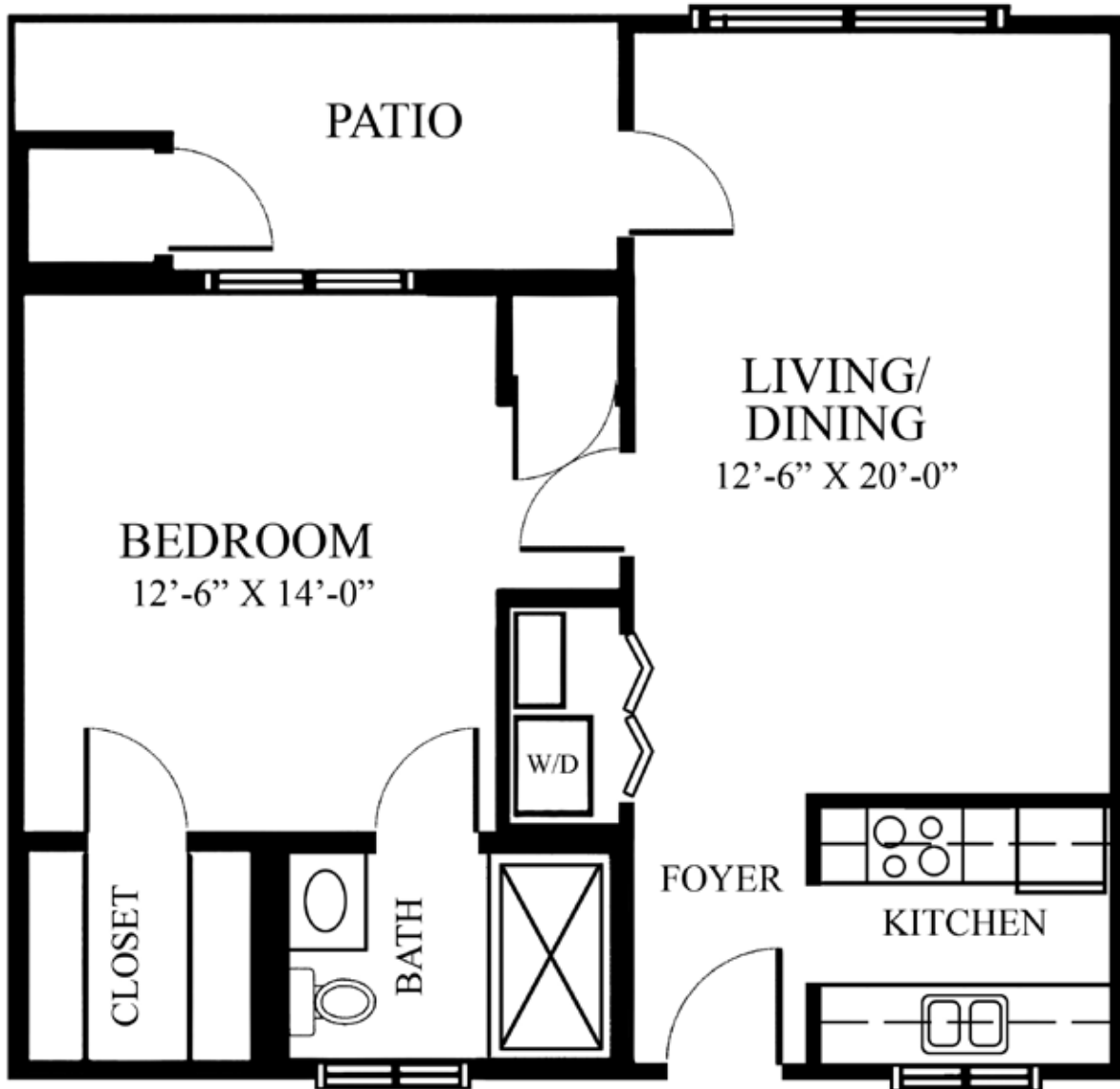


- 975 Square Feet
- Open Living/Dining
- Full Kitchen

- Two Full Baths w/ Linen Closets
- Large Windows
- Easy Access to Service Areas

# *The Aberdeen*

One Bedroom Garden Apartment

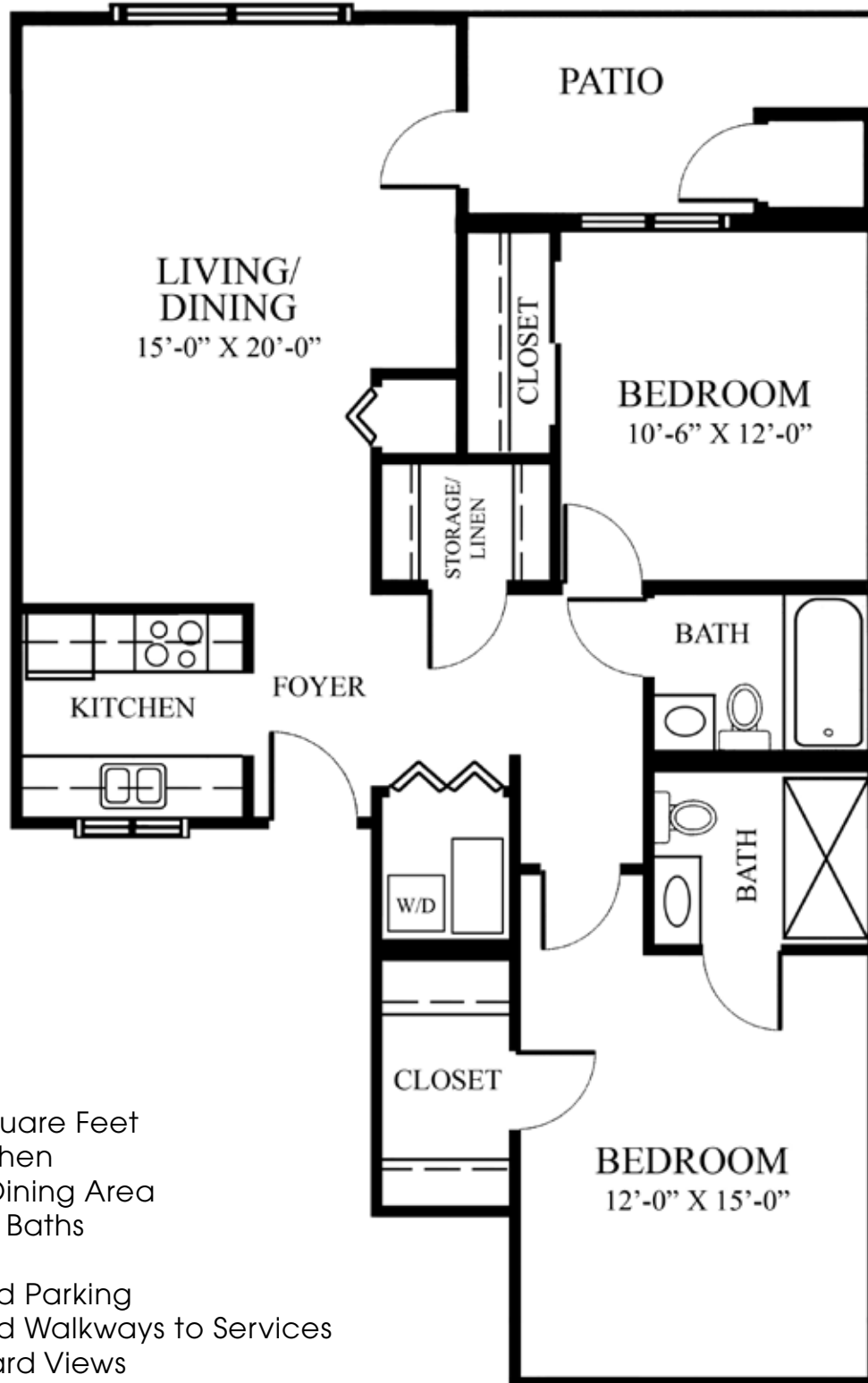


- 712 Square Feet
- Full Kitchen
- Living/Dining Area
- Full Bath

- Patio
- Covered Parking
- Covered Walkways to Services
- Courtyard Views

# The Aberdeen

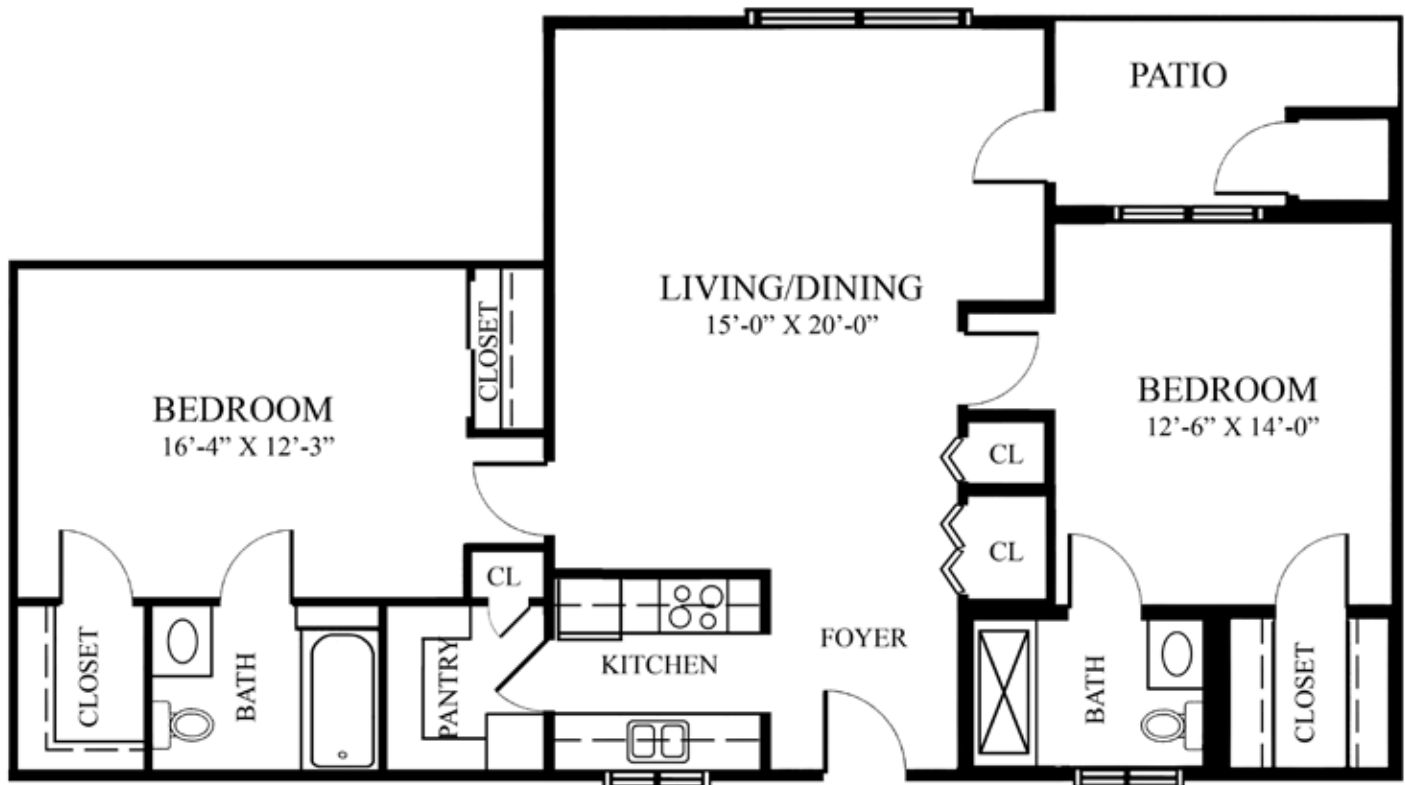
Two Bedroom Garden Apartment



- 1086 Square Feet
- Full Kitchen
- Living/Dining Area
- Two Full Baths
- Patio
- Covered Parking
- Covered Walkways to Services
- Courtyard Views

# The Aberdeen

Expanded Two Bedroom Garden Apartment



- 1160 Square Feet
- Full Kitchen
- Living/Dining Area
- Two Full Baths
- Walk-in Closets

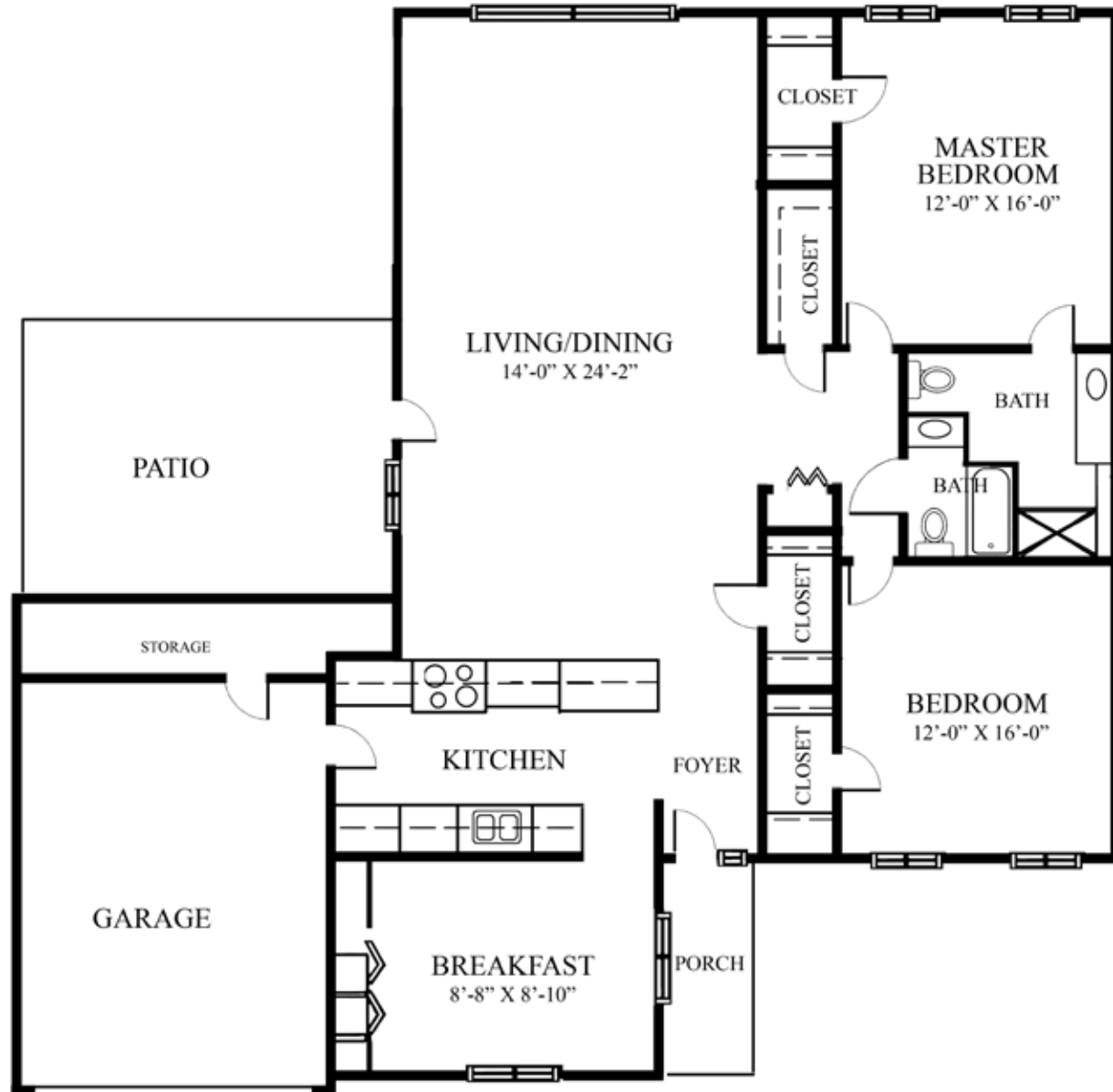
- Patio
- Covered Parking
- Covered Walkways to Services
- Courtyard Views



**VILLAS**  
**& SINGLE FAMILY HOMES**

# The Cromarty

Two Bedroom Villa



- 1400 Square Feet
- Full Kitchen
- Breakfast Area
- Living/Dining Area w/  
Optional Fireplace
- Two Full Baths
- Garage w/Storage
- Backyard Patio
- Front Porch
- Maintenance-free Yard

# The Cromarty

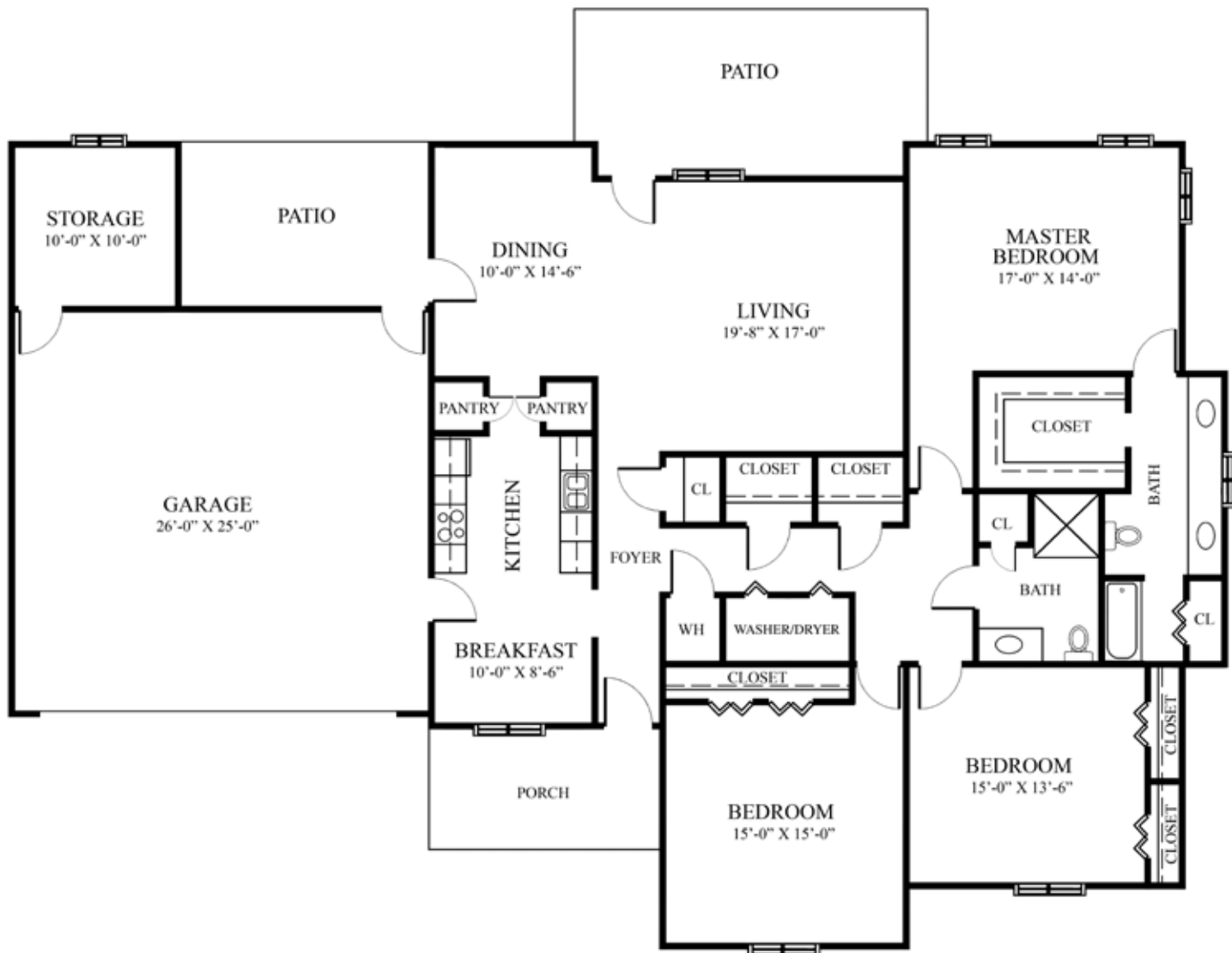
Three Bedroom Villa



- 1675 Square Feet
- Two Full Baths
- Dressing Area in Master Bedroom
- Garden Tub in Master Bath
- Living/Dining
- Fireplace Optional
- Garage w/ Storage Area
- Patio
- Walk-in Closets
- Linen Closet
- Front Porch
- Backyard Patio
- Maintenance-free Yard

# The Inverness

Three Bedroom/Two Bath Home



- 2000 Square Feet
- Open Living/Dining
- Full Kitchen w/Breakfast Area
- Walk-in Closet in Master Bedroom
- 9' Ceilings
- Large Master Bath
- Backyard Patio
- Front Porch
- Double Car Garage w/Storage
- Maintenance-free Yard



---

\*These floor plans are representative of the various floor plans in Scotia Village. They differ due to adaptations to adjust to topography or because of minor changes previous residents have made. Prospective residents should visit the particular home they are offered.

---

**Scotia Village**

*Love Where You Live*